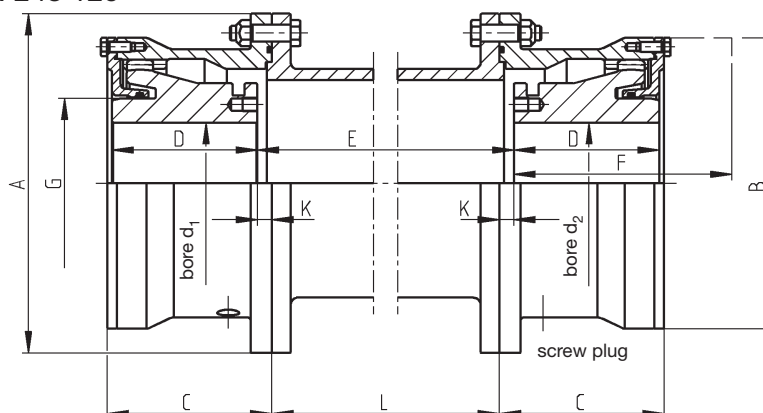


Curved Tooth Couplings

Construction Series SBL

Dimension Table No. 243 129



The dismounting dimension F is required to allow vertical installation and removal of the machines.

Torsional stiffness values, mass moments of inertia for couplings with spacer, and weight details are contained in the data table for SB-type couplings.

Sizes 30 to 200 are available from stock, without spacer.

Other sizes available on request.

The maximum permissible static parallel misalignment depends on the permissible angular misalignment and on the length of the spacer. The permissible angular misalignment for SB-type couplings is $\Delta K_{w \text{ perm.}} = 1.5^\circ$ per coupling half.

Higher misalignment capacity is possible, but requires special measures.

1) The speed n_{max} depends on the length and weight of the spacer.

The maximum speed capacity is determined by the misalignment. Please see the table 'Speed Factors'.

2) Values for the complete coupling without spacer, with bore $d_1, d_{2\text{max}}$.

For coupling selection, please see page 6.

Type SBL	Norm. cont. duty $\frac{P_{KN}}{n}$ kW·min	Speed ¹⁾ n_{max} min ⁻¹	Dimensions											Total grease ²⁾ quantity kg	Total oil ²⁾ quantity litres	Mass ²⁾ moment of inertia J kgm ²	Weight ²⁾ kg	
			bore $d_1; d_2$			A	B	C	D	F	G	K	L					
Size			pre mm	min mm	max mm	mm	mm	mm	mm	mm	mm	mm	mm	mm				
30	0.082	7500	10	12	32	118	92	55	50	75	45	3.5	E-7	0.10	0.04	0.007	4.5	
40	0.146	6900	20	22	46	145	115	68.5	60	90	60	7.0	E-14	0.11	0.06	0.018	8.0	
50	0.288	6300	20	22	58	165	135	78.5	70	110	75	7.0	E-14	0.19	0.10	0.035	11.8	
60	0.50	5900	26	28	70	200	160	91.5	80	120	90	8.5	E-17	0.27	0.14	0.085	19.2	
70	0.82	5400	26	28	78	220	178	102	90	130	100	9	E-18	0.38	0.18	0.138	26.4	
80	1.14	5000	30	32	92	240	196	112	100	150	120	9	E-18	0.43	0.23	0.21	32.5	
90	1.64	4700	30	32	100	270	225	126	110	170	130	12	E-24	0.66	0.35	0.40	50	
100	2.30	4300	53	55	110	280	240	136	120	180	140	12	E-24	0.81	0.41	0.51	57	
110	2.88	4000	63	65	120	310	265	146	130	190	155	12	E-24	1.2	0.57	0.85	75	
125	4.60	3700	73	75	138	340	295	170	150	215	175	15	E-30	1.5	0.74	1.65	104	
140	6.48	3400	83	85	156	390	325	185	165	230	200	15	E-30	1.8	0.98	2.45	147	
160	9.24	3100	118	120	180	435	370	213	190	270	230	17	E-34	2.8	1.6	4.51	208	
180	12.92	2900	138	140	200	480	415	239	220	300	260	17	E-34	3.5	2.1	7.8	295	
200	18.4	2700	158	160	225	545	465	269	245	340	290	20	E-40	5.1	2.8	14.1	422	
220	25.6	2400	158	160	250	580	510	294	270	360	355	24	E-48	5.2	2.8	20.4	532	
240	32.8	2200	178	180	275	645	560	316	290	380	390	26	E-52	7.3	3.5	31.9	687	
260	41.0	2100	198	200	295	680	595	338	310	400	415	28	E-56	8.3	4.0	43.7	832	
280	51.4	2000	218	220	325	745	660	370	340	440	460	30	E-60	10.5	6.0	71	1110	
300	64.8	1900	238	240	340	775	675	390	360	470	480	30	E-60	11.5	8.0	85.8	1255	
320	82.0	1800	258	260	375	825	725	410	380	500	525	30	E-60	13.5	9.0	121	1515	
340	98.6	1700	278	280	400	915	795	430	390	520	560	40	E-80	21	11.0	188	1930	
360	118.3	950	297	300	420	960	840	442	400	540	590	42	E-84	27	12	253	2280	
380	138.0	900	317	320	445	1010	890	462	420	560	625	42	E-84	30	13	355	2660	
400	165.1	875	337	340	460	1050	925	472	430	580	650	42	E-84	33	15	382	2830	

Subject to change due to technical improvement.