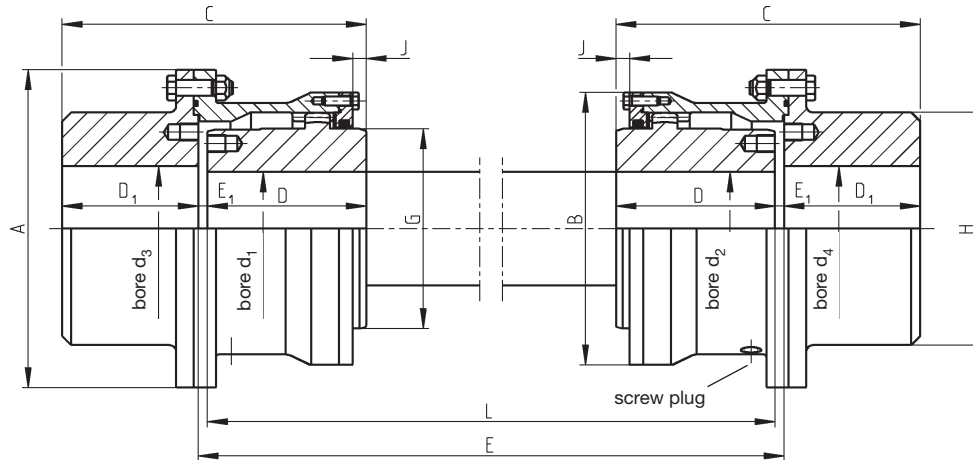


Curved Tooth Couplings

Construction Series SBGk

Dimension Table No. 243 134/ 1



For coupling selection, please see page 6.

Torsional stiffness values for couplings with intermediate shaft and weight details are contained in the data table for SBk-type couplings.

Sizes 38 to 225 are available from stock, without intermediate shaft. Other sizes available on request.

The maximum permissible static parallel misalignment depends on the permissible angular misalignment and on the length of the intermediate shaft. The permissible angular misalignment for SBGk coupling types is $\Delta K_{w \text{ perm.}} = 0.75^\circ$ per coupling half.

Higher misalignment capacity is possible, but requires special measures.

1) The speed n_{max} depends on the length and weight of the intermediate shaft.

The maximum speed capacity is determined by the misalignment. Please see the table 'Speed Factors'.

2) Values for the complete coupling without intermediate shaft, with bores d_1, d_2_{max} and $d_3; d_4_{\text{max}}$.

Type SBGk	Norm. cont. duty Speed ¹⁾ $\frac{P_{KN}}{n}$ kW-min	n_{max} rpm	Dimensions												Total grease quantity kg	Mass ²⁾ moment of inertia J kgm ²	Weight ²⁾ kg	
			bore d_1-d_4 $d_1;d_2$ $d_3;d_4$			A	B	C	D	D ₁	E ₁	G	H	J				
Size			min mm	max mm	max mm	mm	mm	mm	mm	mm	mm	mm	mm	mm	mm	kg	kgm ²	kg
38	0.082	7500	12	42	55	118	92	113.5	60	50	3.5	60	80	5	0.09	0.01	8.3	
48	0.146	6900	22	55	65	145	115	135	70	60	5	77	95	5	0.09	0.03	13.5	
60	0.288	6300	22	65	75	165	135	155	80	70	5	90	112	5	0.17	0.06	20	
70	0.50	5900	28	80	90	200	160	176	90	80	6	112.5	130	4	0.25	0.14	33	
80	0.82	5400	28	92	100	220	178	196	100	90	6	128	150	4	0.35	0.24	46	
90	1.14	5000	32	105	115	240	196	216	110	100	6	145	170	4	0.40	0.38	58	
100	1.64	4700	32	115	130	270	225	243	125	110	8	160.5	190	7	0.60	0.68	86	
110	2.30	4300	55	126	140	280	240	268	140	120	8	176	205	12	0.75	0.95	102	
125	2.88	4000	65	145	155	310	265	288	150	130	8	200.5	225	12	1.0	1.54	135	
140	4.60	3700	75	162	170	340	295	330	170	150	10	224.5	250	10	1.3	2.86	189	
160	6.48	3400	85	185	195	390	325	365	190	165	10	256.5	285	15	1.6	4.60	255	
180	9.24	3100	120	210	225	435	370	422	220	190	12	288.5	325	18	2.6	8.54	380	
200	12.92	2900	140	230	250	480	415	482	250	220	12	320.5	360	18	3.3	15.1	526	
225	18.4	2700	160	260	280	545	465	539	280	245	14	362	410	21	4.8	26.7	763	
250	25.6	2400	160	280	320	580	510	738	300	300	138	400	450	164	5	40	995	
265	32.8	2200	180	310	340	645	560	800	330	330	140	440	520	174	7	57	1244	
280	41.0	2100	200	325	370	680	595	840	330	330	180	460	520	194	8	77	1408	
315	51.4	2000	220	360	390	745	660	911	360	360	191	510	550	205	10	122	1846	
335	64.8	1900	240	380	410	775	675	966	380	380	206	535	580	219	11	155	2214	
355	82.0	1800	260	410	440	825	725	1016.5	400	400	216.5	580	620	228.5	13	209	2612	
375	98.6	1700	280	440	460	915	795	1042.5	420	420	202.5	620	650	224.5	20	320	3565	
400	118.3	950	330	470	485	960	840	1075.5	440	440	195.5	665	680	226.5	26	411	3904	
425	138.0	900	355	500	510	1010	890	1126.5	460	460	206.5	710	720	237.5	29	545	4554	
450	165.1	875	370	520	535	1050	925	1159	480	480	199	730	750	240	32	659	5240	

Subject to change due to technical improvement.