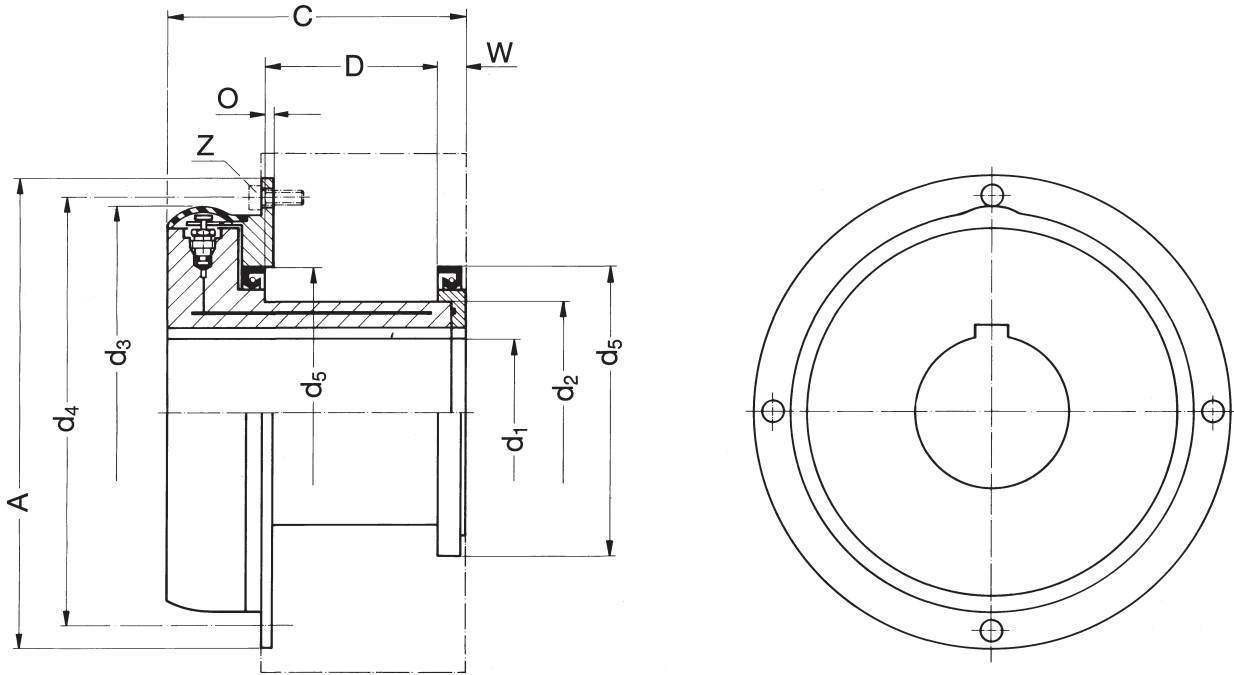


HYGUARD® Safety Couplings

Series BN



Table of Dimensions No. 243 082



The HYGUARD® series BN is designed for drives with keyed shaft. This model has an integrated keyway, and is therefore particularly suitable for converting existing drives. Intermediate sleeves to com-

pensate changes in diameters are not required. On this version, the sliding surface is located on the outer diameter. The sliding velocity should not exceed 1.5 m/s.

1) Higher speeds on request

For surface roughness and tolerances, please see page 9.

Dimensions are subject to change due to technical progress.

Type BN	Torque Range T ~ Nm	Speed ¹⁾ n _{max.} rpm	Dimensions											Weight kg	Mass Moment of Inertia J kgm ²
			d ₁ mm	d ₂ mm	d ₃ mm	d ₄ mm	d ₅ mm	A mm	C mm	D mm	Z	W mm	O mm		
52	600 – 1200	551	26 – 35	52	114	121	72	135	80	31	M 6x4	9	4	5,4	0,008
60	1000 – 2000	477	30 – 40	60	119	131	90	145	95	46	M 6x4	9	4	6,7	0,010
70	1500 – 2900	409	38 – 48	70	128	140	100	154	100	51	M 6x4	9	4	7,9	0,013
80	2100 – 4200	358	45 – 55	80	139	147	110	161	105	56	M 6x4	9	4	8,9	0,017
90	3000 – 6000	318	50 – 60	90	147	157	125	171	115	58	M 6x4	13	4	11	0,024
100	3900 – 7800	286	60 – 70	100	157	166	140	180	125	68	M 6x4	13	4	14	0,034
110	5000 – 10000	260	65 – 80	110	167	177	150	191	130	73	M 6x4	13	4	16	0,046
120	7000 – 14000	239	70 – 85	120	174	183	160	197	140	83	M 6x4	13	4	18	0,059
130	9000 – 17000	220	80 – 95	130	184	196	170	211	150	93	M 8x4	13	4	20	0,080
140	10000 – 20000	205	80 – 105	140	194	204	180	219	160	103	M 8x4	13	4	23	0,10
150	13000 – 25000	191	95 – 115	150	202	213	185	228	170	117	M 8x4	11	4	25	0,13
160	17000 – 33000	179	100 – 120	160	212	223	190	238	180	117	M 8x4	16	4	29	0,16
180	23000 – 46000	159	115 – 135	180	235	246	220	262	190	133	M 8x4	13	4	35	0,22
200	35000 – 70000	143	130 – 155	200	256	266	240	282	200	137	M 8x4	16	4	44	0,36
220	48000 – 96000	130	140 – 170	220	276	286	260	302	230	167	M 8x4	16	4	58	0,55
250	70000 – 140000	115	160 – 190	250	294	316	290	332	250	185	M 8x4	17	4	74	0,88
280	90000 – 180000	102	180 – 210	280	322	345	320	360	270	205	M 8x4	17	4	101	1,53